

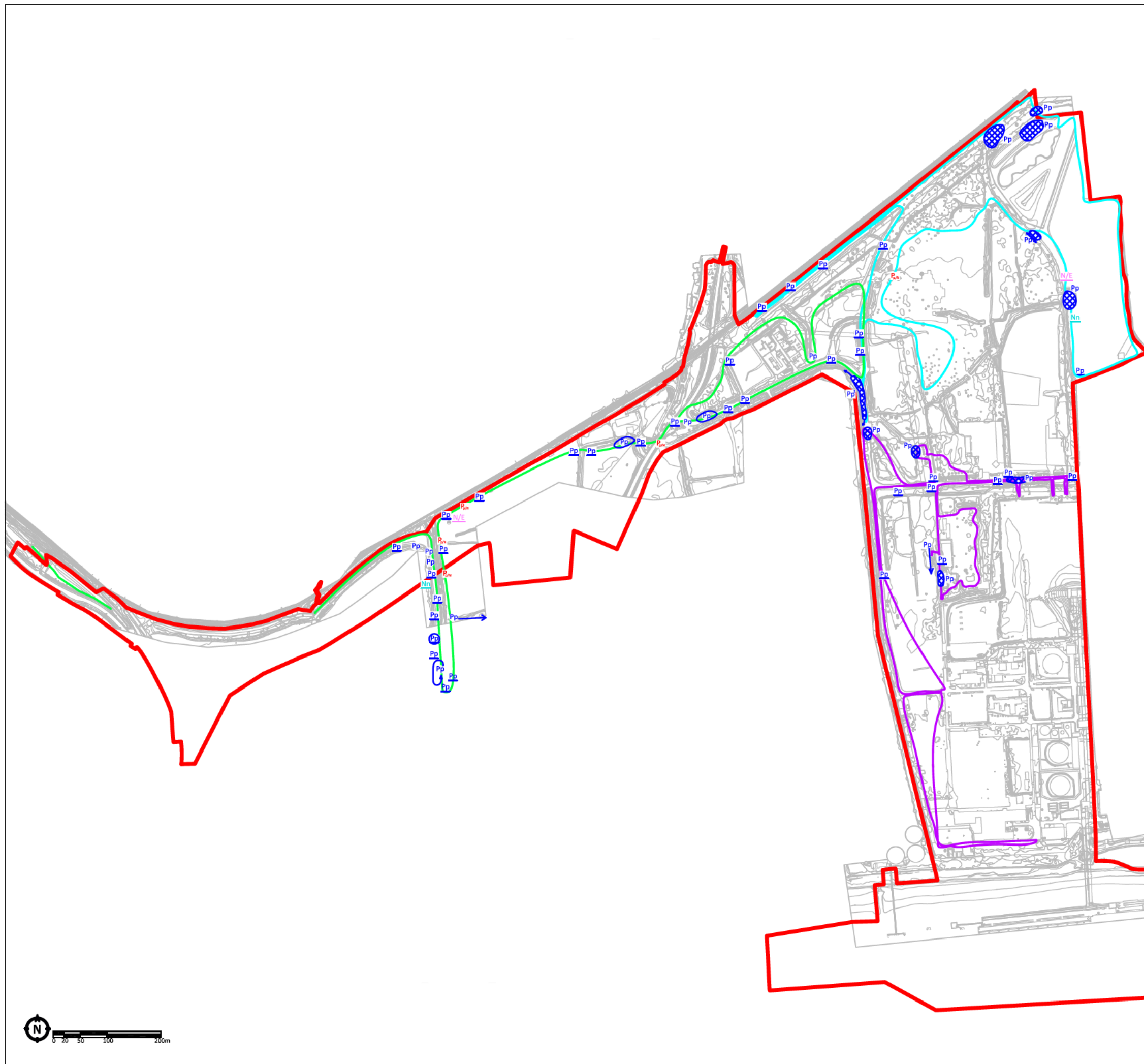
- ORDER LIMITS
- TRANSECT ROUTE 1 (WEST)
- TRANSECT ROUTE 2 (NORTH)
- TRANSECT ROUTE 3 (SOUTH)
- Pp COMMON PIPISTRELLE
- N/E NYCTALUS/EPTESICUS SP.
- Pp→ COMMUTING (SHOWING DIRECTION OF FLIGHT)
- Pp PASS
- FORAGING



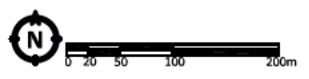
REV	DATE	DESCRIPTION
DRAWING TITLE		
Bat survey results: bat activity transects (April 2017)		

SCALE	1:7143 @ A3	DRAWN	FM	FIG. 10.6b
DATE	OCT 2017	CHECKED	DW	





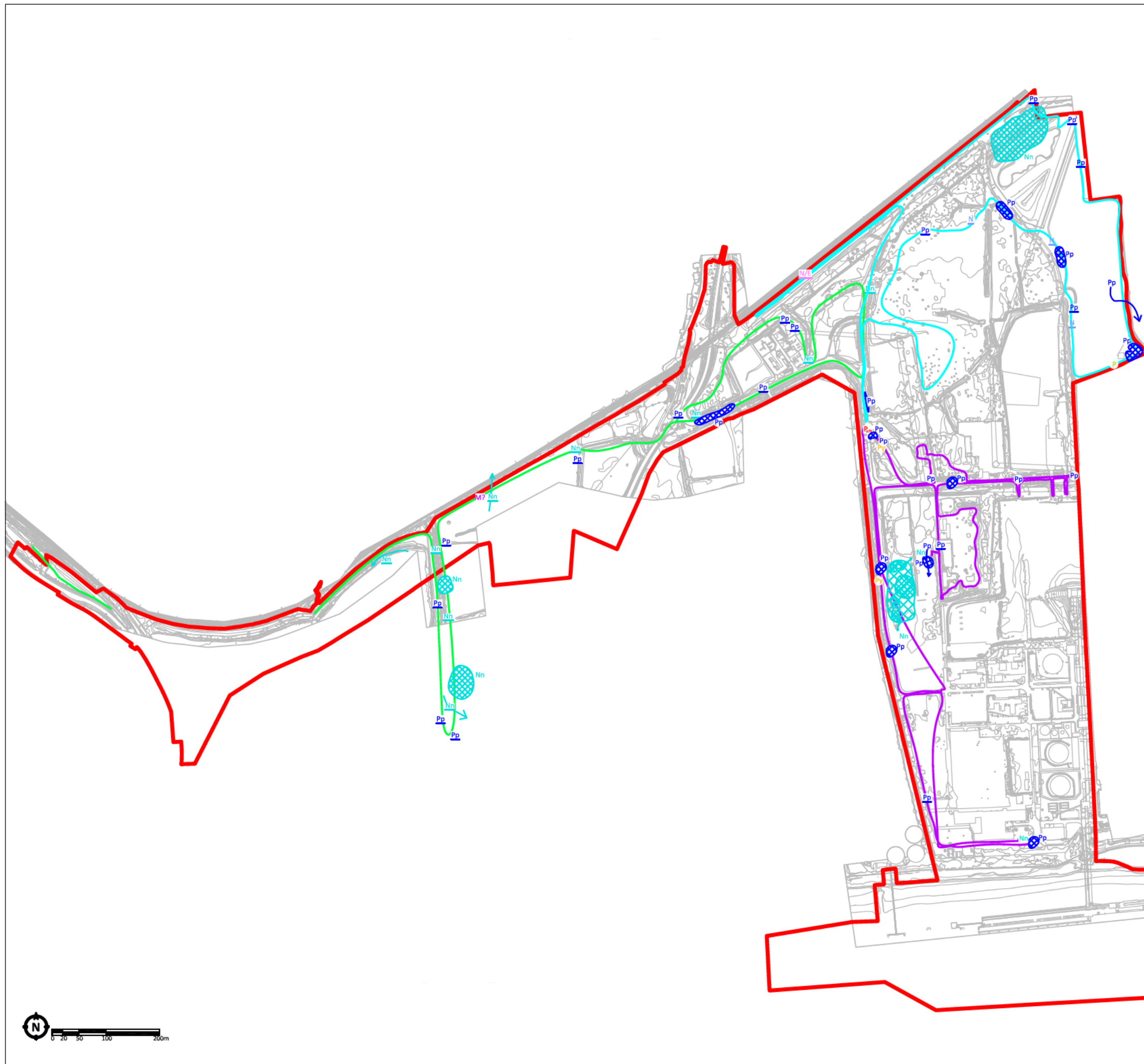
- ORDER LIMITS
- TRANSECT ROUTE 1 (WEST)
- TRANSECT ROUTE 2 (NORTH)
- TRANSECT ROUTE 3 (SOUTH)
- Pp COMMON PIPISTRELLE
- Pp/N PIPISTRELLE SP. (COMMON/NATHUSIUS)
- N/E NYCTALUS/EPTESICUS SP.
- Nn NOCTULE
- Pp→ COMMUTING (SHOWING DIRECTION OF FLIGHT)
- Pp PASS
- FORAGING
- Pp² NUMBER OF BATS



REV	DATE	DESCRIPTION
DRAWING TITLE		
BAT SURVEY RESULTS: BAT ACTIVITY		
TRANSECTS		
(MAY 2017)		
SCALE		DRAWN
1:7143 @ A3	FM	
DATE	CHECKED	
OCT 2017	DW	

FIG. 10.6c





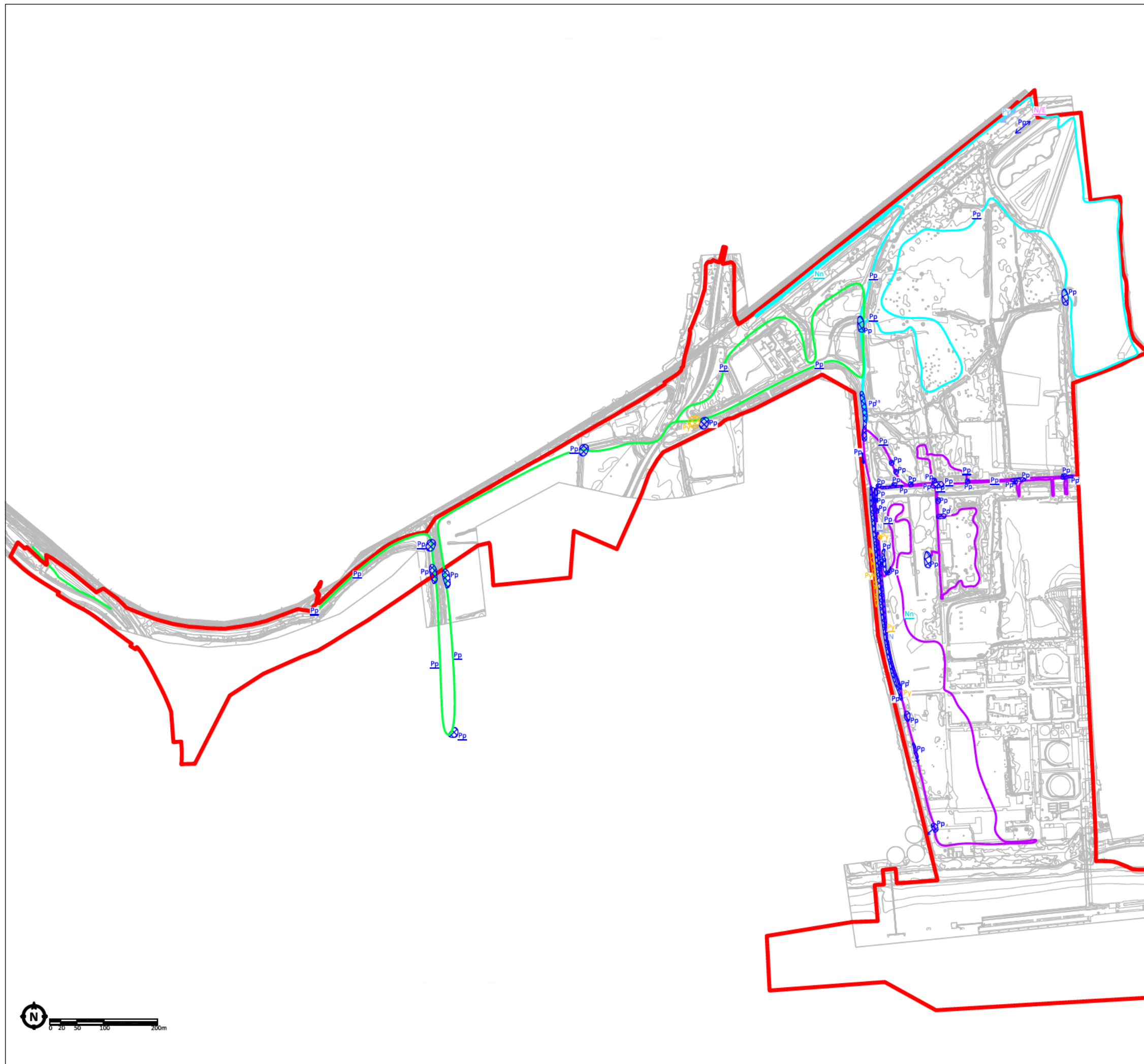
- ORDER LIMITS
- TRANSECT ROUTE 1 (WEST)
- TRANSECT ROUTE 2 (NORTH)
- TRANSECT ROUTE 3 (SOUTH)
- P PIPISTRELLE SP.
- Pp COMMON PIPISTRELLE
- Py SOPRANO PIPISTRELLE
- Pp/N PIPISTRELLE SP. (COMMON/NATHUSIUS)
- N NYCTALUS SP.
- N/E NYCTALUS/EPTESICUS SP.
- Nn NOCTULE
- M MYOTIS SP.
- Pp→ COMMUTING (SHOWING DIRECTION OF FLIGHT)
- Pp PASS
- ▨ FORAGING
- Pp² NUMBER OF BATS



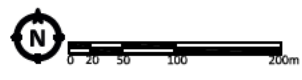
REV	DATE	DESCRIPTION
DRAWING TITLE		
BAT SURVEY RESULTS: BAT ACTIVITY		
TRANSECTS		
(JUNE 2017)		

SCALE 1:7143 @ A3	DRAWN FM	FIG. 10.6d
DATE OCT 2017	CHECKED DW	





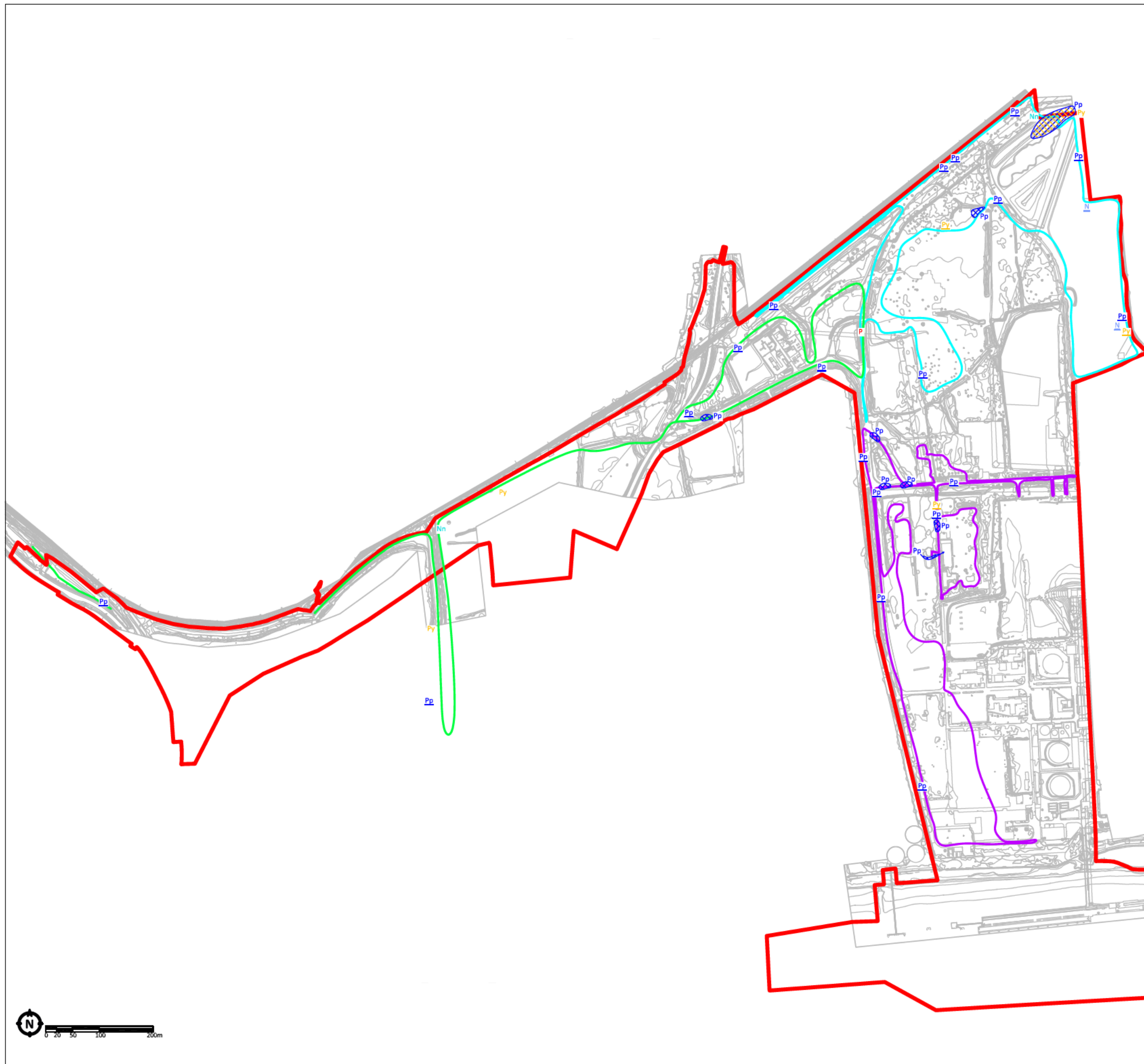
- ORDER LIMITS
- TRANSECT ROUTE 1 (WEST)
- TRANSECT ROUTE 2 (NORTH)
- TRANSECT ROUTE 3 (SOUTH)
- Pp COMMON PIPISTRELLE
- Py SOPRANO PIPISTRELLE
- N/E NYCTALUS/EPTESICUS SP.
- N NYCTALUS SPECIES
- Nn NOCTULE
- Pp² NUMBER OF BATS
- Pp→ COMMUTING (SHOWING DIRECTION OF FLIGHT)
- Pp PASS
- X FORAGING



REV	DATE	DESCRIPTION
DRAWING TITLE		
BAT SURVEY RESULTS: BAT ACTIVITY		
TRANSECTS		
(JULY 2017)		
SCALE	DRAWN	
1:7143 @ A3	FM	
DATE	CHECKED	
OCT 2017	DW	

FIG. 10.6e





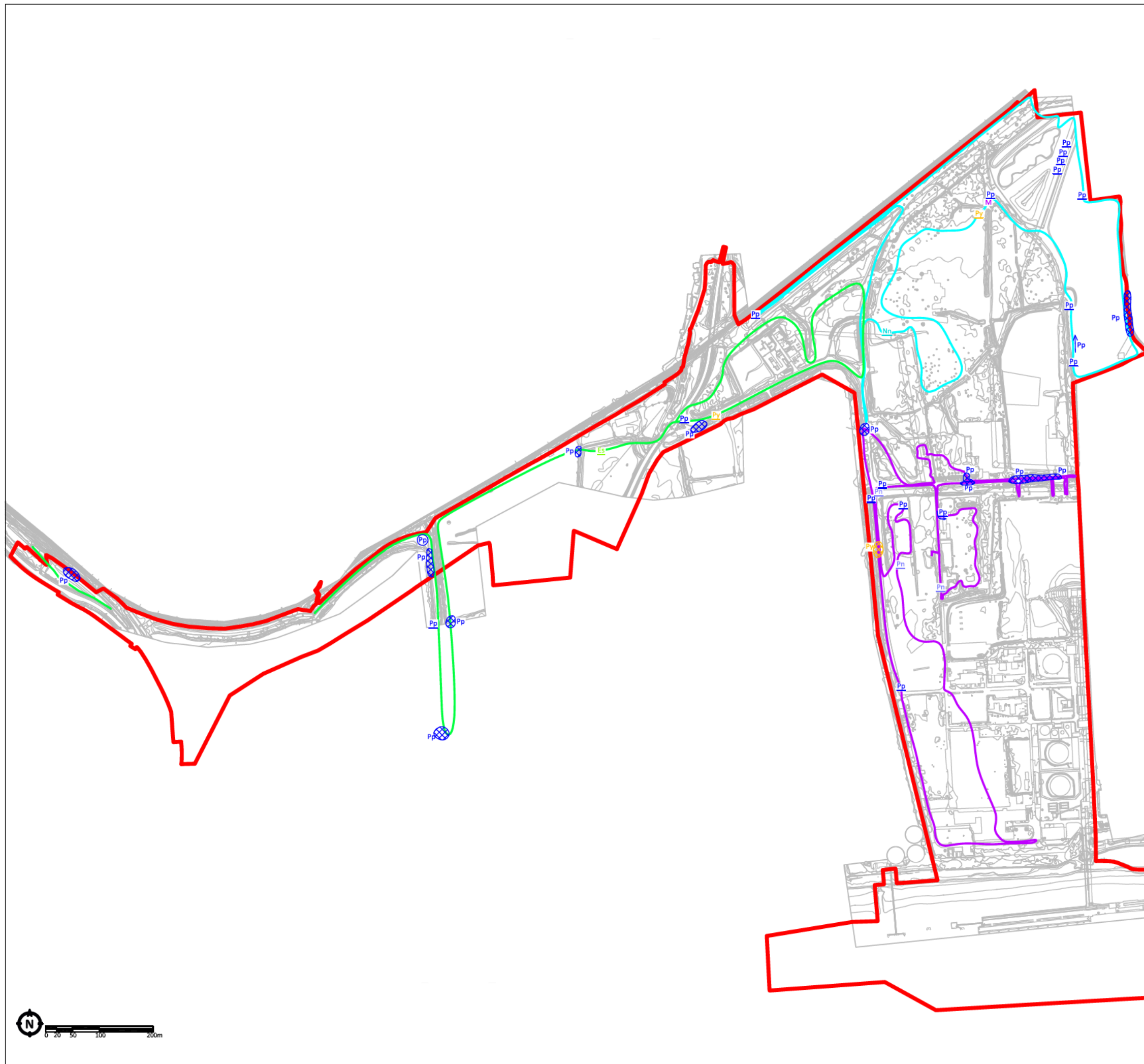
- ORDER LIMITS
- TRANSECT ROUTE 1 (WEST)
- TRANSECT ROUTE 2 (NORTH)
- TRANSECT ROUTE 3 (SOUTH)
- Pp COMMON PIPISTRELLE
- Py SOPRANO PIPISTRELLE
- P PIPISTRELLE SP
- Nn NOCTULE
- N NYCTALUS SP.
- Pp→ COMMUTING (SHOWING DIRECTION OF FLIGHT)
- Pp PASS
- ▣ FORAGING



REV	DATE	DESCRIPTION
DRAWING TITLE		
BAT SURVEY RESULTS: BAT ACTIVITY		
TRANSECTS		
(AUGUST 2017)		
SCALE	DRAWN	
1:7143 @ A3	FM	
DATE	CHECKED	
OCT 2017	DW	

FIG. 10.6f



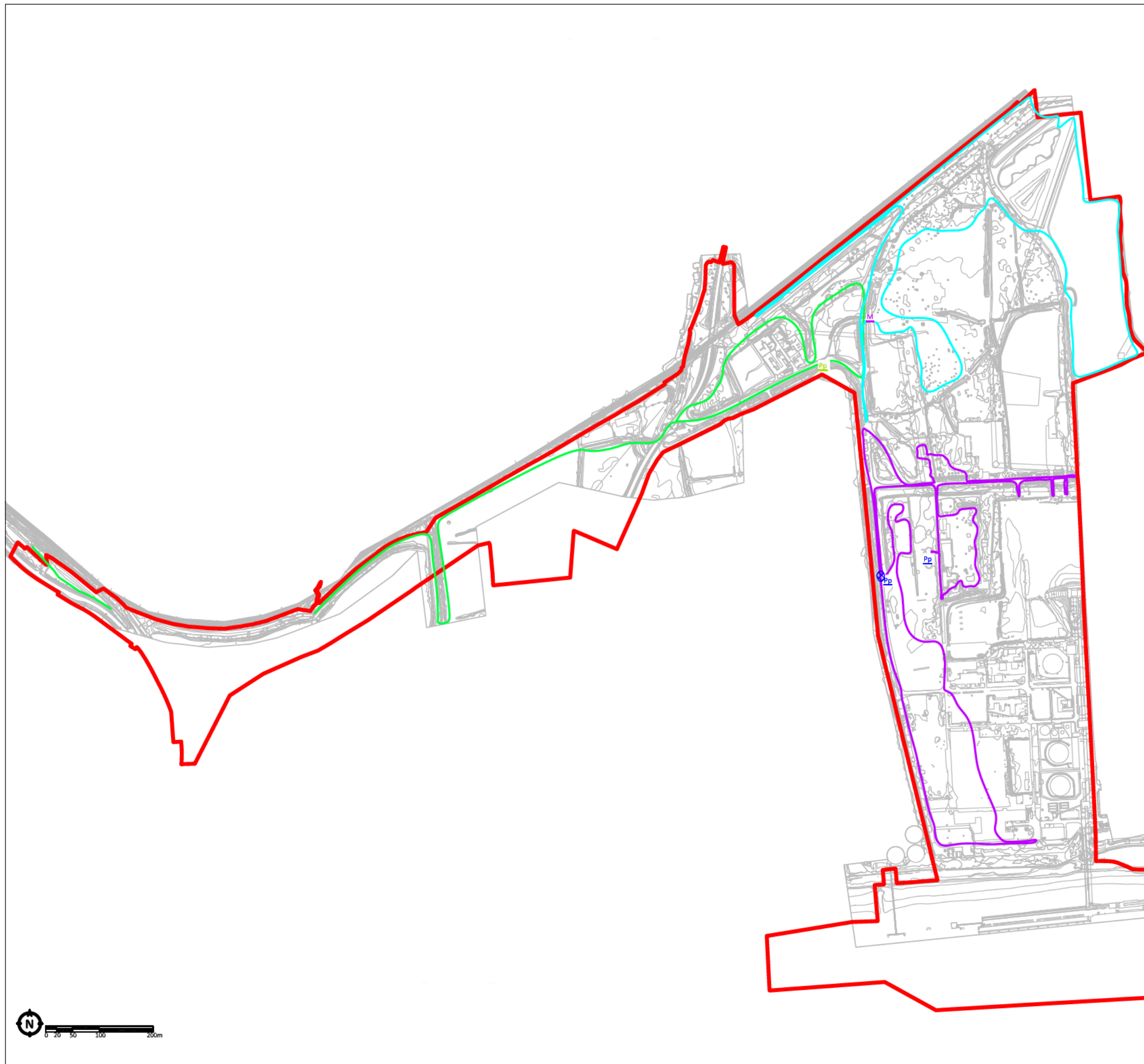


- ORDER LIMITS
- TRANSECT ROUTE 1 (WEST)
- TRANSECT ROUTE 2 (NORTH)
- TRANSECT ROUTE 3 (SOUTH)
- Pp COMMON PAPISTRELLE
- Py SOPRANO PAPISTRELLE
- Pn NATHUSIUS' PAPISTRELLE
- Es SEROTINE
- M MYOTIS SP.
- Nn NOCTULE
- Pp→ COMMUTING (SHOWING DIRECTION OF FLIGHT)
- Pp PASS
- Pp SOCIAL CALL
- ⊗ FORAGING

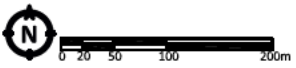


REV	DATE	DESCRIPTION
DRAWING TITLE		
BAT SURVEY RESULTS: BAT ACTIVITY		
TRANSECTS		
(DUSK - SEPTEMBER 2017)		
SCALE	DRAWN	FIG. 10.6g
1:7143 @ A3	FM	
DATE	CHECKED	
OCT 2017	DW	





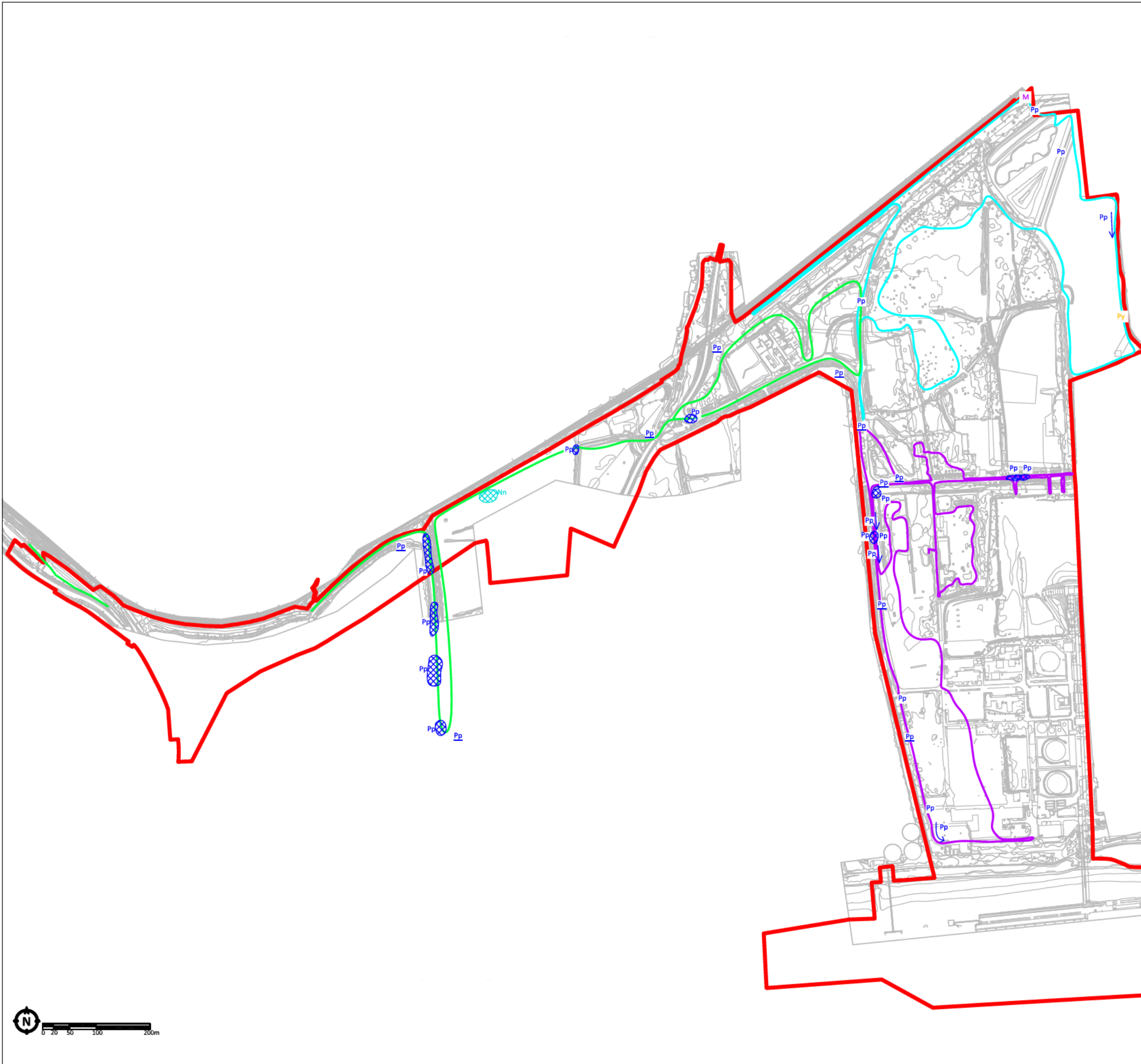
- ORDER LIMITS
- TRANSECT ROUTE 1 (WEST)
- TRANSECT ROUTE 2 (NORTH)
- TRANSECT ROUTE 3 (SOUTH)
- Pp COMMON PIPISTRELLE
- P PIPISTRELLE SP.
- M MYOTIS SP.
- Pp→ COMMUTING (SHOWING DIRECTION OF FLIGHT)
- Pp PASS
- ⊠ FORAGING



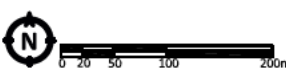
REV	DATE	DESCRIPTION
DRAWING TITLE		
BAT SURVEY RESULTS: BAT ACTIVITY		
TRANSECTS		
(DAWN - SEPTEMBER 2017)		
SCALE	DRAWN	
1:7143 @ A3	FM	
DATE	CHECKED	
OCT 2017	DW	

FIG. 10.6h





- ORDER LIMITS
- TRANSECT ROUTE 1 (WEST)
- TRANSECT ROUTE 2 (NORTH)
- TRANSECT ROUTE 3 (SOUTH)
- Pp COMMON PIPISTRELLE
- Py SOPRANO PIPISTRELLE
- Nn NOCTULE
- M MYOTIS SP.
- Pp→ COMMUTING (SHOWING DIRECTION OF FLIGHT)
- Pp PASS
- ⊗ FORAGING



REV	DATE	DESCRIPTION
DRAWING TITLE		
BAT SURVEY RESULTS: BAT ACTIVITY		
TRANSECTS		
(OCTOBER 2017)		
SCALE		DRAWN
1:7143 @ A3		FM
DATE		CHECKED
OCT 2017		DW

FIG. 10.6i

